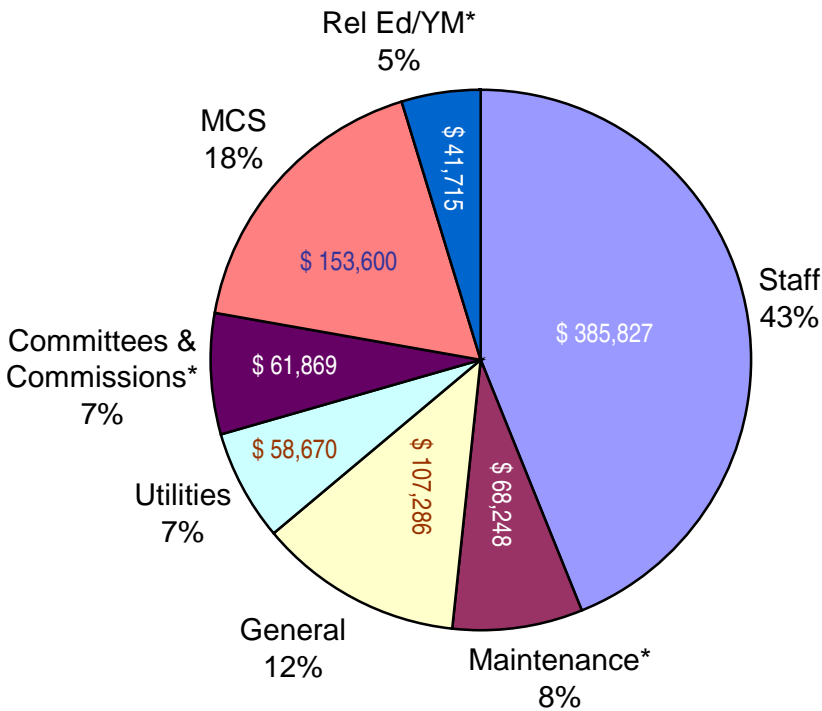


Summary of Expenditures FY June 30, 2015



- Staff = Salaries & Benefits for Parish Staff & Clergy
- Maintenance = Buildings & Grounds
- General = Insurance, Parish Tax, Office Expenses, Background Checks, Register, Consultation
- Utilities = Gas, Electric, Water, Phones
- Committees & Commissions = Liturgy, Library, Evangelization, Social Concerns, etc
- MCS Subsidy is currently 18% and will increase in the coming FY. Over half the students at MCS currently come from STM.
- Rel Ed/YM = Preschool, K-6, Youth Ministry, RCIA, Nursery, & Adult Ed

*Heavily Supported by Volunteers

- Our collections for last fiscal year were about \$8,000 short of our actual expenditures and we are tracking a little further behind our budgeted needs for this fiscal year. Our staff has done a tremendous job of carefully watching expenses and staying at or below budget. When budgets are exceeded, it has usually been due to unexpected repairs or replacement of equipment.
- Capital Reserve—Our goal is to recreate a Capital Reserve account to cover the eventual replacement of significant equipment and building components. While we have made great strides in the last couple of years, we still have several areas of deferred maintenance that need to be addressed as budget allows. Our previous capital reserve was depleted with the construction of the Parish Commons.
- Strength in Numbers—By averaging a small increase per family, we could raise over \$110,000 and begin to restore the Capital Reserve. Alone we are like one drop, united we are like an ocean.

If the	Contributing between	Gave an extra	It would equal
568 Families	\$0-\$200	\$50 a year	\$28,400
195 Families	\$201-\$1,000	\$100 a year	\$19,500
319 Families	\$1,001+	\$200 a year	\$63,800

- We are very fortunate to have parishioners willing to contribute their time and provide in-kind donations when needed. Volunteers help keep our budget down! Thank you!

We appreciate everyone who has been good stewards to our parish through their Time, Talent, & Treasure!

THANK YOU!